

# Gate valve

in carbon steel, alloy steel and stainless steel

PN40

DN40-600



### Design

- Shut of valve in casted steel
- Straight patten with vertical stem and bolted bonnet
- Raised, turning stem
- Stem sealing in graphite
- Out blowing safe stem
- Back sealed stem
- Flanged or butt welded ends
- Welded seat
- Seat in Cr-steel or Stellite
- Self adjusted gland

### Standards

- Design EN 1984, EN 12516
- Face to face EN 558-1-26series,
- Flanges EN 1092-1
- Welded ends EN 12627
- Labeling EN 19
- Pressure test EN 12266-1
- CE-mark according PED97/23, category 3

### Applications

- Water, steam, and other medium which not damage the internal components
- Uses within the all kind of industries
- The valves are designed for shut of application or simple regulation



**Table 1. Technical data**

Dimension	DN 40 to DN600
Material	Up to PN40, Carbon steel, alloy steel Stainless steel
Pressure	PN 40
Temperature range	-10°C to 400°C
Connections	Flanged, butt weld end
Seat	13 Cr, Stellite
Disc	Shut of and regulation

**Table 2. Pressure- temperature range** according to EN 1092-1

Material body	PN	RT	100	150	200	250	300	350	400	450	500	520	530
Carbon steel 3EO, 1.0619	40	16.0	14.9	13,9	12.4	11.4	10.3	9.6	9.2				
Stainless steel 13EO, 1.4404	40	13.5	11.7	10.7	9.7	9.0	8.5	8.0	7.7	7.4	7.1		
Stainless steel 14EO, 1.4408		14.6	12.4	11.2	10.3	9.6	9.0	8.5	8.2	8	7.8	7.7	7.5

# Gate valve

in carbon steel, alloy steel and stainless steel

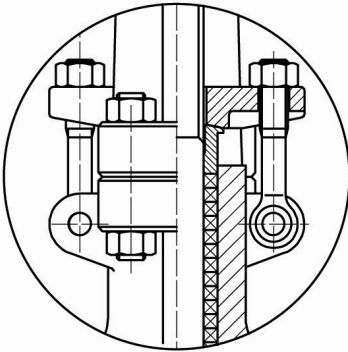
PN40

DN40-600

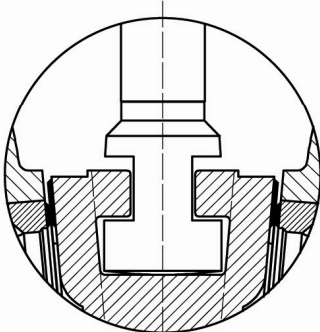


Casted valves  
DN40-DN600

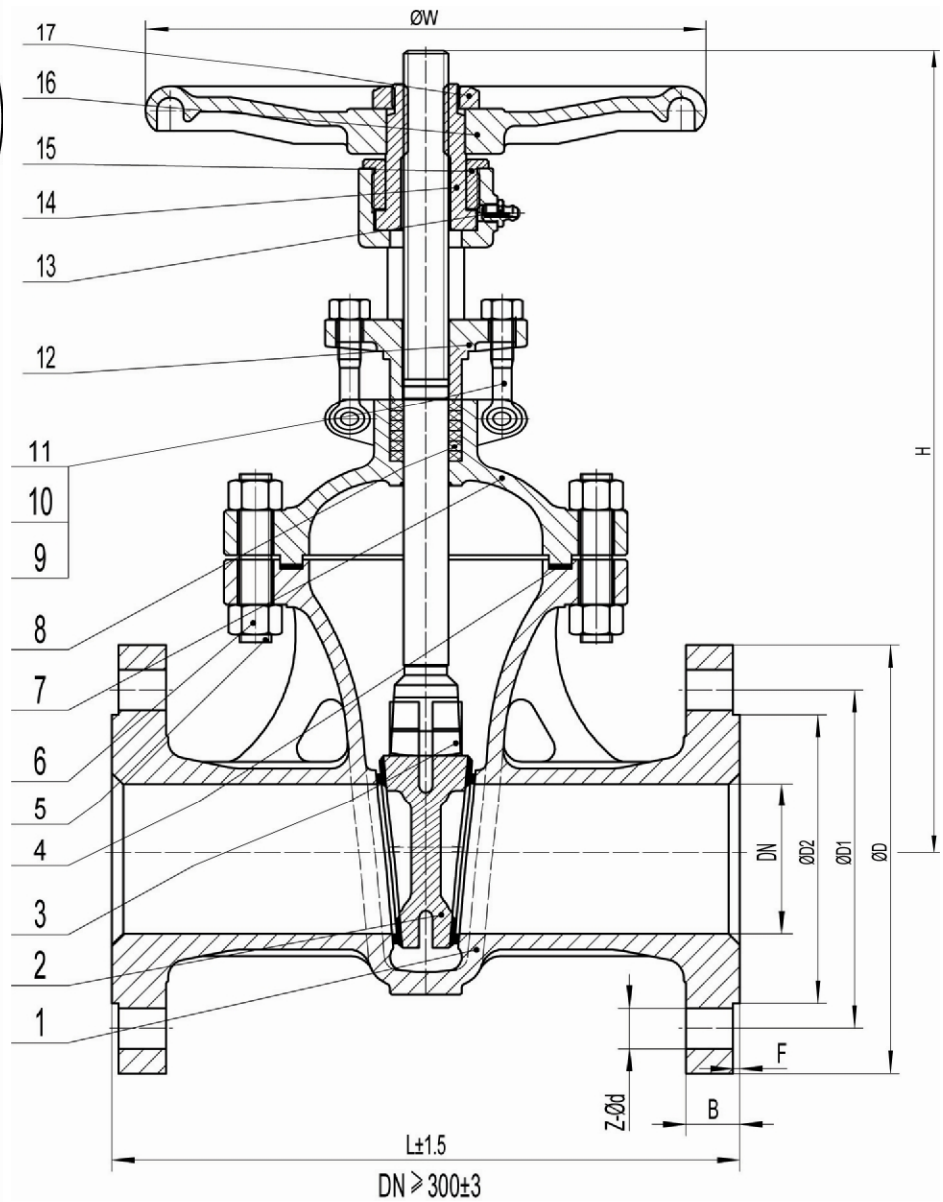
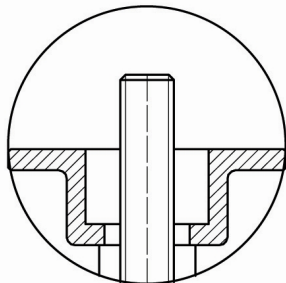
DN ≥ 250



DN ≥ 125



DN ≥ 300 ISO 5210



# Gate valve

in carbon steel, alloy steel and stainless steel

PN40

DN40-600



Table3.Material specification-DN40-DN600									
POS	Detail	carbon steel -10°C till 400°C		Alloy steel -10°C till 530°C		stainless steel -20°C till 200°C			
1	Body	1.0619		1.7357		1.4308		1.4408	
2	Wedge	1.0619		1.7357		F304		F316	
	Seat	13Cr	Stelite	17Cr	Stelite	SS304	stelite	SS316	stelite
3	Stem	X20Cr13		X20Cr13		F304		F316	
4	Nut	A194 2H		1.7709		A194 8		A194 8	
5	Stud	A193 B7		1.7709		A320 B8		A320 B8	
6	Gasket	SS304+Graphite/PTFE		SS304+Graphite/PTFE		SS304+Graphite/PTFE		SS316+Graphite/PTFE	
7	Bonnet	1.0619		1.7357		CF8		CF8M	
8	Packing	Graphite/PTFE		Graphite/PTFE		Graphite/PTFE		Graphite/PTFE	
9	Nut	A194 2H		1.7709		A194 8		A194 8	
8	Bolt	A193 B7		1.7709		A320 B8		A320 B8	
9	Eye blot	A193 B7		1.7709		A320 B8		A320 B8	
10	Pin	C22.8		C22.8		SS304		SS304	
11	Nut	A194 2H		1.7709		A194 8		A194 8	
12	Gland	1.0619		1.7357		CF8(2C1)		CF8M(2C2)	
13	Oil Filler	Cu alloy		Cu alloy		Cu alloy		Cu alloy	
14	Stem Nut	Cu alloy		Cu alloy		Cu alloy		Cu alloy	
15	Gland Nut	C22.8		C22.8		C22.8		C22.8	
16	Handwheel	C22.8		C22.8		C22.8		C22.8	
17	Lock Nut	C22.8		C22.8		C22.8		C22.8	

# Gate valve

in carbon steel, alloy steel and stainless steel

PN40

DN40-600



**Table 4.** Dimension and weight. PN16-PN25/40

Face to face: flanged acc. to EN 558-1 serie 1. Flange acc.to EN1092-1, type B1,

Face to face: butt welded acc.to EN12982, serie 1; butt weld ends acc.to EN12627

DN	PN	L	D	D1	D2	B	F	Z-Φd	Weigh Flang	ΦW	H <sub>max</sub>	Kv Z=4,4
mm		mm	mm	mm	mm	mm	mm	antxmm	Kg	mm	Mm	m <sup>3</sup> /h
40	40	240	150	110	88	18	3	4x18		200	323	59
50		250	165	125	102	20	3	4x18		280	372	90
65		290	185	145	122	22	3	8x18		280	395	149
80		310	200	160	138	24	3	8x18		300	457	236
100		350	235	190	162	24	3	8x22		350	552	360
125		400	270	220	188	26	3	8x26		400	634	567
150		450	300	250	218	28	3	8x26		400	708	815
200		550	375	320	285	34	3	12x30		400	858	1400
250		650	450	385	345	38	3	12x33		450	1015	2300
300		750	515	450	410	42	4	16x33		500	1210	3249
350		850	580	510	465	46	4	16x36		600	1345	4420
400		950	660	585	535	50	4	16x39		600	1490	5770
450		1050	685	610	560	50	4	20x39		700	1780	9015
500		1150	755	670	615	52	4	20x42		700	1850	9015
600		1350	890	795	735	60	5	20x48		700	1910	9015